

The



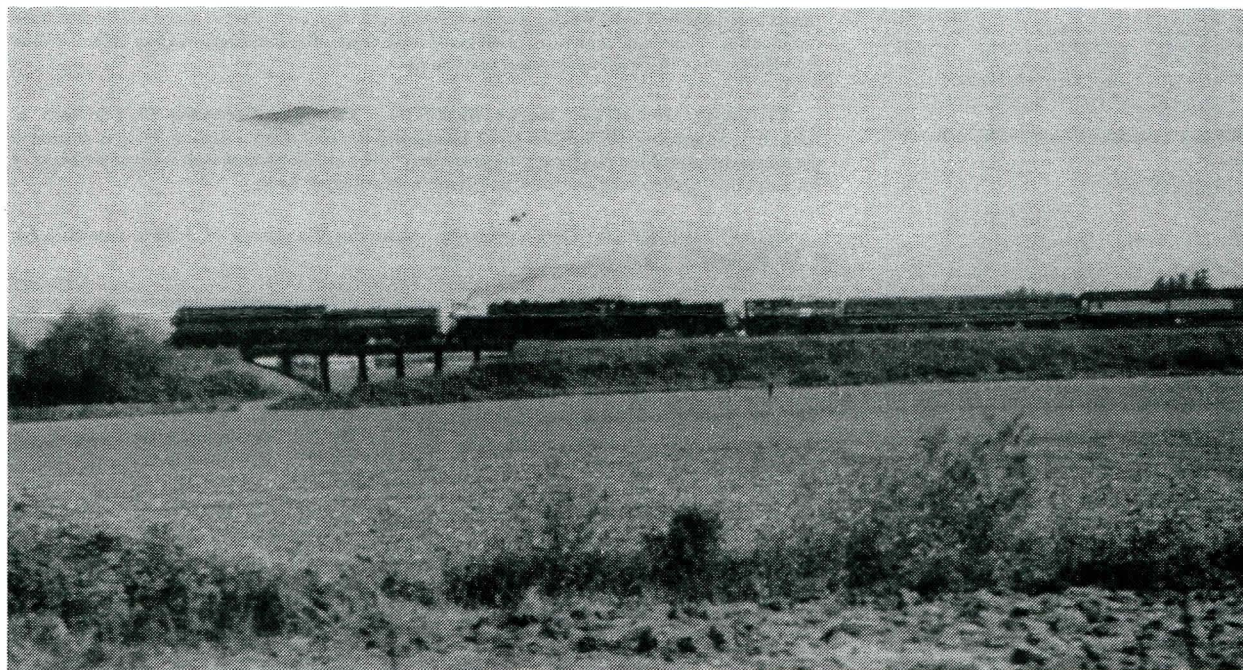
TRAINMASTER



Official Publication of the Pacific Northwest Chapter, National Railway Historical Society.

DECEMBER 1992

NW DROUGHT HITS 4449



Last year at the Oregon State Fair, people got to see two 4-8-4 Northern's as the fair. Not at the same time, but it was exciting never the less.

This year the trip to and from the fair would prove to be a first for both Northern's. In late August both engines left Portland and doubleheaded south (railroad west) to Salem to be on display. Both engines have made alot of trips around the Northwest, but this was the first time they pulled a train together.

At the fair both engines had their fires turned off. Last year, the sound of their whistle scared the baby farm animals that were in the building next to the engines.

On September 8, the Northern's headed home. The SP 4449 was on the point with the SP&S 700 bringing

up the rear. On the return trip, the WR41 dispatcher was not their friend, as the train was put in every siding waiting for freights. While waiting in the hole at Coalca, Doyle noticed he was low on water and would not have enough to make it back to Brooklyn.

The 700 had its water car, but the 4449 did not. The chapters auxiliary tender was being used with the SP 4-6-2 #2472 in California, (see page 32, December TRAINS) so the 4449 had no water car. Doyle stared into the tender, shaking his head. The 4449 was bone dry. The SP&S 700 came to the rescue and pushed the 4449 and the train home.

The TRAINMASTER

is the official newsletter of the Pacific Northwest Chapter of the National Railway Historical Society, published monthly for the benefit of its members. Articles which appear in *The Trainmaster* do not express the official National Railway Historical Society position on any subject unless specifically noted as such. Material from *The Trainmaster* may be reprinted in other publications provided credit is given as to the source. Please address contributions, correspondence, and exchange copies of newsletters to:

Attn. TM Editor
PNWC-NRHS
Room 1, Union Station
Portland, OR 97209-3715

EDITOR:

Kristopher Lundt
3808 NE 109 AVE, #P7
Vancouver, WA 98682

CIRCULATION:

Chuck Storz - 289-4529

MEMBERSHIP in the PNWC-NRHS is available as follows:

Regular...\$27/yr.

Joint...\$32/yr.

For more information contact the Membership Chairman, at the above address.

DEADLINES

The deadline for each issue of *The Trainmaster* is the 20th of the previous month. Submissions may be made on floppy disk, in Wordperfect, MS Word, or ASCII formats. *The editor reserves the right to edit or hold material at his discretion.*

—Kristopher

CHAPTER TIMETABLE NO. 363

REGULAR RUNS

BOARD OF DIRECTORS MEETING Thursday, December 10, 7:00pm, at room 208, Union Station. Down there where all the Amtrak trains come in. All Chapter members are welcome.

MONTHLY MEMBERSHIP MEETING Friday, December 18, 7:30pm, at Portland General Electric auditorium on SE 17th Avenue between Powell and Holgate. The business meeting will start promptly at 7:30, with the newsreel and program following after a short break. Refreshments will be available; please bring some money to feed the "kitty" so Kitty can continue to feed you. The program is listed below.

WEEKLY NO-HOST LUNCHEON every Saturday, 12:00 noon, at the Semaphore Restaurant at SE 17th Avenue and Holgate Blvd. Our group sits in the back. Come on down!

ROLLING STOCK WORK SESSIONS every Tuesday and Saturday, at the Chapter's tracks in Brooklyn Yards. Working hours are 9am to 3-4pm on Tuesday, 10am to late afternoon on Saturday. There's a lot of work of all kinds to be done. Contact Richard Gray (656-0260) or Bob Hoffman (236-7710) to see what you can do.

LIBRARY/ ARCHIVES WORK SESSION Thursday, December 10, 1 to 4pm & Saturday, December 19, 9:30am to 12:00 noon at Room 1, Union Station. Help is needed to get things organized and catalogued. Contact Jerry Webb at 298-8163 or Bob Weaver at 654-4274 for more information— or just show up! There's lots of work to do.

CHAPTER LIBRARY OPEN HOURS Saturday, December 19, 1:30 to 4pm at Room 1, Union Station.

EXTRA BOARD

15th ANNUAL RAILROADIANA & MODEL RR SWAP MEET Saturday, March 13, 1993, 10:00am to 4:00pm at the Jackson Armory, 6255 NE Cornfoot Road, Portland Or. For information write to Doug Auburg, CGMRC, 2505 N. Vancouver Ave. Portland, Or 97227

GREAT AMERICAN TRAIN SHOW--March 20 & 21 at Multnomah County Expo Center, Portland, Or. December 19 & 20, 1992 at Weastem Washington Fair, 9th & Meridian, Puyallup, Washington.

DECEMBER MEETING PROGRAM

to be Announced

Program begins after business meeting

Notice: Programs are needed for future meetings. Anyone who is willing to present a program (slides, film, etc.) at a Chapter meeting, please contact Chuck Bukowsky 284-7277

CHAPTER BUSINESS

FROM THE PRESIDENT

This shall be my last newsletter as President. The new President takes over at the January 1993 meeting.

I would like to express my thanks and appreciation to all chairpersons, committee members, and other chapter members who made it possible to "survive" the past year. The lack of real trips to make our budgetary goals was a chore at best. As frustrating as it was, we still had some fun. Even some of the doomsayers had to admit we "made it", but not without expending much energy.

Hopefully in 1993, the railroads will reconsider their rail excursion position, not only with Amtrak, but with the PNWC using our own equipment. With lease and sale agreements being made by SP, and new rail companies in the state, we may realize what started four years ago as a dream may come true.

I hope to see new faces in the chapter activities-new blood, with new and creative ideas, fun and excitement for the health of PNWC. Don't let the mean-spirited put a wet blanket on our activities. We as members have to realize that life is a compromise, and so our things we do as a chapter.

We must operate more like a business as we grow. Some things we do have to be done by more than volunteers.

One big event next year is the Union Pacific trip from Kansas City, if we can pull it off. It will require a large number of members volunteering their time and effort to make it as successful as our other excursions. I know we can do it--it is up to you, our members!

One final note. I would like to give special thanks to Michael Callanan for doing such a great job on the *Trainmaster*. I wish him well in his new endeavor, and to the new co-editors Kristopher Lundt and John Lukans.

-Chuck Bukowsky

Because of new insurance requirements, the following indemnity statement must be a part of our by-laws. Because the policy renewal just came through, we must pass this at our December regular monthly membership meeting. Therefore, under Article XI, the Board passage of the following:

To the fullest extent not prohibited by the Oregon Nonprofit Corporation Act, as it exists on the date hereof or may hereafter be amended or be restricted by other applicable law then in effect, the Corporation (i) shall indemnify any person who is made, or threatened to be made, a party to an action, suit or proceeding, whether civil, criminal, administrative, investigated, or otherwise (including an action, suit or proceeding by or in the right of the Corporation by reason of the fact that the person is or was a Board of Trustees member of the Corporation), and (ii) may indemnify any person who is made, or threatened to be made, a party to an action, suit or

proceeding, whether civil, criminal administrative, investigated, or otherwise (including an action, suit or proceeding by or in the right of the Corporation by reason of the fact that the person is or was an officer, employee or agent of the Corporation). This section shall not be deemed exclusive of any other provisions for the indemnification of Board of Trustees members, officers, employees or agents that may be included in the Corporation's Articles of Incorporation or Bylaws, any statute, agreement, resolution of members or Board of Trustees members or otherwise, both as to action in any official capacity and action in any other capacity while holding office, or while an employee or agent of the Corporation.

SUMMARY OF MINUTES- REGULAR CHAPTER MEETING- NOVEMBER 20, 1992

The meeting was called to order at 7:34 PM.

1992 voters guide lines were distributed to members present, indicating that elections would be held at the December 18, chapter meeting.

President moved to accept minutes from the November meeting. Fred Dorsett presented Excursion report high lighting the meeting with Amtrak. A Vancouver BC Amtrak trip being planned has been moved to next fall. UP turned down an Amtrak trip to Spokane on their lines. Suggestion was made that we get a Banquet License to serve liquor.

Treasurer Maxine Rodabaugh handed out copies of the 1993 budget and balance sheet, showing an October closing assets of \$3237.73. Motion to approve 1993 budget was passed.

New membership roster is ready and is being sent to the printers. It will be available by end of the year.

The President presented the Roberts Rules for suspending election sections. Section 18 of the Roberts Rules of the By-laws, Article IV-Section 4.01, 4.02 & 4.03; Article V- Section 5.02, this section moves the elections to December 1992.

Rolling Stock: Car 3300 is receiving new windows. Next year BN wants to lease chapter cars for June trip from Whitefish to Glacier Park. The Baldwin AS-616 O&NW #2, is still at UP's Albina Yard, it has been off load and on its own trucks, and it has been weatherized. The other Baldwin is still in Seattle. The DODX flat cars have been hit twice. The locomotive moved 3". UP is fixing the flat cars and the engine cannot be moved until they are repaired. SP has not paid for the repair cost from the accident 2 years ago, that put the 3300 on the ground. The SP&S MT. HOOD was also damaged in that accident.

Membership: Renewal notices were handed out to members present-balance to be mailed. Membership stands at 514.

Museum: Oregon trail Commission (OTC) ap-

CHAPTER BUSINESS

proved a train trip, as of Wed 11/18, from KC to Portland. It will be the return of the Union Pacific City of Portland train. Duration, cost have not been determined. The President proposed that the staff and car host be paid for their work, per diem amount to be approximately \$20/day. Excursion with the UP train should be discussed with the UP for advice on trip, lodging, etc. There are other proposals being presented to the OTC by other groups and chapters for a railfan trip. Motive power for the train has not been selected yet. Proposed time frame-early June.

Report on equipment at Powers; Georgia Pacific is sponsoring a group in Newport that will use much of the material and PNWC will have the option on the balance, including paperwork.

Jack Holst Award: Peter Rodabaugh announced 1991 nominees; Doug Auburg, Roger White, Bob Weaver. The 1991 winner-Roger White. 1992 nominees are Doug Auburg, Bob Weaver, Brad Reese. Nomination from the floor was made for Freda Webb. 1992 vote will be held in December. Awards will be given at annual banquet in January.

Marilyn Edgar announced that Lee Jackson has been in & out of the hospital and encouraged members to send cards.

Lewis & Clark Christmas Tree Train, December 4, 5, 6, & 12 are sold out. Experienced car host are needed-sign ups were requested.

Maxine Rodabaugh announced that the chapter Futures Committee draft is still available (1) for each member.

Library: Library will not be opened on Thanksgiving weekend.

Meeting adjourned at 8:47 PM

Submitted by Joe Wright

PS. A big thanks to Joe for taking the minutes. Chuck has the flu.

SUMMARY OF MINUTES - BOARD OF DIRECTORS MEETING - NOVEMBER 12, 1992

The meeting was called to order by President Chuck Bukowsky at 7:12 PM.

The Chapter board passed the following motions at its November meeting: 1) Instructed the finance committee to meet with prospective bookkeeper Helen Pilgrim to determine a realistic number of hours a month required to perform the Chapter's bookkeeping work. 2) Approved the lease of RDC 6905 to the Lewis & Clark Ry. for several weekends in December, 1992 with possible extension of the lease into 1993. 3) Approved on an emergency basis the delaying of annual Chapter elections to the December, 1992 meeting due to difficulty in filling out the list of candidates. 4) Approved a 1993 budget for the Chapter as proposed by the finance committee and recommended its adoption by the membership. 5) Approved the text of an indemnity clause to be

added to the Chapter by laws, said clause required for insurance purposes, and recommending adoption by the membership.

Locomotives: Ed Berntsen reported that he is investigating the details of the demurrage charges for the flat cars used by the Chapter to move the O.N.W. and Alaska locomotives with the objective of reducing the charges. Peter Rodabaugh reported that the blocking securing the locomotive in Seattle to the flat car has been repaired and that movement of the car is waiting on the approval of the U.P. Seattle car foreman.

Museum Car 76: Al McCready brought up the possible insuring of the contents of car 76 in light of the board's decision not to insure the car itself as a cost saving measure. The need for an inventory of car 76's contents was also discussed.

Excursions: Fred Dorsett reported that the excursion committee met last Monday with Ron Shipley of Amtrak to plan excursion for 1993. Possibilities mentioned are a round trip U.P. excursion to Spokane and a BN Spokane circle trip.

Chapter Election: President Chuck Bukowsky proposed and the board agreed (see motion above) to delay the annual Chapter election to December. Reasons for the delay are difficulty in getting candidates to run and the need to prepare a voters guide.

National Director Report: Bob Hoffman reported that the NRHS national board has elected Chapter member Rich Carlson to be NRHS Northwest Regional Vice President. Also, national is coming out with a new membership application form.

The meeting was adjourned at 11:30 PM.

Respectfully submitted, Chuck Storz, Secretary

HELP WANTED

The TWIN GROVE is a ex-Milwaukee Road, 46 seat Cafe-Lounge car that is currently being restored. Frank Weiler needs help with:

WELDING PLUMBING

ELECTRICAL AIR CONDITIONING

OR WHAT EVER YOU CAN DO

Call Frank at 503-774-3319

CALL FOR PHOTOS

The TRAINMASTER is in need for photos of:

Interior shot of UP's dome-diner.

Up or down stairs, any subject.

B/W prints are preferred.

If you have any photos that fit, contact the editor.

BACK TRACK

PNWC members' railway experiences

Ray S. Hewitt, of Corvallis, a member since 1980, writes us that among his most exciting and memorable experiences were riding in a cab of WP&Y engine; riding WP&Y, Durango & Silverton, Cumbres & Toltec scenic. Also talking to retired railroad engineers, riding Swiss and Scandinavian rails; rack rail rides in Switzerland and on Pike's Peak, in Colorado.

Ray is interested in steam, narrow gage, passenger, Amtrak, freight, scenic rail trips, the human side of railroading (life in the cab for engineers and firemen), MoW material and equipment.

COLUMBIA GORGE MODEL RR CLUB INC.

15th Annual Railroadiana & Model RR Swap Meet, sponsored by the PNWC-NRHS and the CGMRC.

Saturday, March 13, 1993, 10:00am to 4:00pm

Cost: \$2.50 age 12 to adult, under 12 free with an adult.

Rent: \$13 per table (\$1 extra if electricity and/or a wall table is needed).

Make checks payable to CGMRC.

Location: Jackson Armory, 6255 NE Cornfoot Road, Portland

For information write to Doug Auburg, c/o CGMRC, 2505 N. Vancouver Ave, Portland Or, 97227 or call (503) 28TRAIN anytime (leave msg) or (206) 694-7769 evenings

IN MEMORY

This past year, our chapter lost 3 of its members.

James E. Wollam of Glendale Ca. past away in June. George was a member for 10 years, he made it north to visit us a couple of times. He was a collector of paper items.

George Combs also past away this year. He was our insurance agent for many years, he had been a member since the early '80s.

Brad Reese had been a active member for years. He was a Mechanical Engineer and he did a lot of work on our RDCs. He worked on the piping, refrigeration, and heating. Brad was also an opera lover. Just before Brad past away, he and his wife and daughter took the grand toured of the Mt Hood, the ex-SP&S sleeper-lounge car.



RAIL NEWS

TOO MUCH WINE

(Napa, Ca)-On August 15, a wedding party on board the Napa Valley Wine Train came to an abrupt halt when the railroad stopped the train and ejected ALL 72 passengers because of drunkenness, disorderly conduct and verbal abuse.

-Arkansas Railroader

NO STEAM IN CALIFORNIA

At the Union Pacific Historical Society banquet June 26, 1992, UP's Steve Lee announced that the trip to San Jose for the NRHS convention that summer should be the last Union Pacific steam trip ever to California because of smoke restrictions. Apparently, after the San Jose trips, UP was fined by the state for smoke.

-Arkansas Railroader

WESTSIDE LIGHT RAIL GETS UNDER WAY

In November, ground breaking got under way for the Westside Max line. Construction on the tunnel that will go under the zoo, will start in spring 1993, and the line will open in September 1997. The cost will be about \$759-million to build, and it's estimated that by the year 2005, 25,000 people will be riding on the new line.

The line will take off from SW 13th Ave and Yamhill St. and end at SW 185th Ave and Baseline Road, a distance of about 12 miles. The trip will take about 26 minutes, with each train carrying 300 passengers.

from The Portland Downtowner via Nick White

Join with us as we celebrate the Golden Anniversary of the largest operating steam locomotive in the world by featuring the Union Pacific "Challenger" #3985 (1943-1993). Also featured will be the Norfolk Southern Steam Program which promises something quite special for steam enthusiasts. To round out our schedule, we expect to offer a Metra / Chicago & North Western excursion to the Illinois Railway Museum and a trip on the last surviving interurban - the Chicago, South Shore & South Bend.

Our Convention hotel will be the historic Palmer House Hilton which is the oldest continuously operating hotel (1871), and one of only thirty "Grand Palace" hotels, in the nation. Following a recent \$120 million renovation, the 1600 guest rooms and splendid public spaces will afford us the luxury of holding the entire Convention under one roof for the first time in years. Located in the heart of Chicago's famous Loop, shopping, cultural attractions, and transportation are all within easy walking distance of this exciting, downtown setting. We have negotiated an extremely favorable room rate of \$75.00 (single or double occupancy). For those looking for something extra, reservations in the exclusive "Towers" section may be arranged.

As a complement to our full schedule of excursions, we will offer an extensive range of collateral activities. A large Railroadiana and Model Railroad Show (22,000 square feet) will be conveniently located adjacent to our Registration area. Multiple night photo sessions, at various locations and under expert direction, are also planned to accommodate those wishing to attend these often hard to get into events.

Shuttle bus service to such world class attractions as the Art Institute, Museum of Science and Industry, Shedd Aquarium, Adler Planetarium, Field Museum of Natural History, Brookfield and Lincoln Park Zoos, as well as the "Magnificent Mile" (home to the finest stores in the world), will operate each day. We also expect to be able to offer major league baseball, as either the Cubs or the White Sox are sure to be in town, and a guided tour of the CTA. An innovative symposium program is planned, with multimedia presentations by such recognized authorities as George Krambles and highly educational field trips to places like Pullman.

Pre-Registration is available now, through February 15, 1993, for a fee of \$15.00 (\$5.00 off the post February 15th price). This includes all fees required to attend the Convention, First Class Mailing of all materials, and Convention Badges for all those in your immediate family.

1993 NRHS Convention Pre-Registration

Name _____

Address _____

City/St/Zip _____

NRI IS Membership Number (Required) _____

Enclose your Check or Money Order in the amount of \$15.00 (made payable to 1993 NRI IS Convention) and mail to:

1993 NRI IS Convention
Post Office Box 53
Oak Park, IL 60303

**Pacific Northwest Chapter
National Railway Historical Society**

LIBRARY COMMITTEE SURVEY

We are doing a survey of Chapter members and Library Committee members to find out your interests and to help us plan for our 1993 activities. We need to decide on the direction the Library Committee should take, and your responses will help us plan.

The Library Committee is responsible for cataloging and maintaining the Chapter library of books, magazines, timetables, video tapes, photographs, maps, drawings and other archival materials. We keep the library two days a month, generally the two Saturday afternoons following the Chapter's general membership meetings.

Chapter members can check out the books and video tapes for a month at a time. All other cataloged materials are available in the library for research use by anyone interested in railroad history.

Here are some questions we'd like you to think about and respond to:

1. How can the Library Committee best serve the chapter and help it meet its goals?

2. Do you have suggestions on how the committee could improve the library?

3. Are you interested in serving on the Library Committee in 1993?

Yes ____ No ____

4. Would you be interested in helping us arrange, describe and catalog any of the following:

Books ____ Magazines ____ Timetables ____
Photos ____ Maps/Drawings ____ Paper Records ____
Newsclippings ____
Other interests: _____

Please see other side

- 5. Would you be interested in serving as committee chair in 1993 or as chair of one of the subcommittees working with the different library and archival materials?

Committee chair _____ Subcommittee chair _____

- 6. The library has been open two Saturday afternoons a month.

This schedule is adequate _____

Should be open more often _____

Open less often _____

Comment _____

- 7. Any other comments or ideas about the chapter library?: _____

Please return the questionnaire to Bob Weaver or Jerry Webb, or leave in Room 1. If you have any questions about the library feel free to call Jerry (1-298-8163), Bob (654-4274) or questions about photograph cataloging, Walt Grande (246-3254).

Thanks for your help!

Member Name _____ Phone _____

Here are the specifics of the subscription rate agreement with L&RP:

1. All current NRHS members are able to subscribe to L&RP for \$2.50 per year below the regular rates. NRHS subscription rates are:

\$19.00 for one year (vs. regular rate of \$21.50),
\$36.00 for two years (vs. regular rate of \$41.00).
NRHS rates outside the U.S. are \$22.00 and \$42.00 respectively.

2. These rates apply to renewals of existing subscriptions as well as new subscribers.

3. Members will subscribe to L&RP in the usual manner, except that the Interurban Press circulation department will need demonstration of NRHS membership. Initially, this will be the Chapter name (or "Associate"), which will be checked periodically against Society membership records.

4. Beginning with the 1994 membership year, members may start or renew L&RP subscriptions as part of the regular dues renewal process. This feature will not be ready in time for the upcoming 1993 dues renewal

5. Society members who currently hold two-year or longer subscriptions to L&RP are entitled to an equivalent extension for each year of unfulfilled subscription. In order to claim this extension, you must enclose your mailing label and write to:

Circulation Department
Locomotive & Railway Preservation Magazine
P.O. Box 6128
Glendale, CA 91225-0128

Gregory P. Molloy
Gregory P. Molloy
Secretary

This form contains all information necessary to order Locomotive & Railway Preservation at the special NRHS rate. Rates include applicable California state sales tax. If renewal, please attach mailing label.

Subscription Order: U.S.A. Outside the U.S.A.
___ One year (6 issues) @\$19.00 ___ One year (6 issues) @\$22.00
___ Two years (12 issues) @\$41.00 ___ Two years (12 issues) @\$42.00

Payment: ___ Check or money order enclosed (payable to Interurban Press)

or bill to my: ___ VISA ___ Master Card Card #: _____

Expires: _____
Print name as shown on card _____ Authorized signature _____

Day telephone: (_____) _____ (credit card orders)

Ship to: _____
Name Street
_____ City/State/Zip Chapter Name (or "Associate")

Mail to: Interurban Press, P.O. Box 6128, Glendale, CA 91225-0128

COMMITTEE CHAIRS

Activities: Vacant
Meeting Program Coordinator: Vacant
Bylaws: Vacant
Concessions: Marilyn Edgar, 236-7271
Excursions: Irv Ewen, 232-2441
Finance: Vacant
Library & Historical Foundation: Jerry Webb,
298-8163
Membership: Tammy Auburg, (206) 694-7769
Museum: Dave Stimac, 656-9392
Public Relations: Al McCready, 281-2415
Publications: Vacant
Rolling Stock: Richard Gray, 656-0260
Chief Mech. Off.: Peter Rodabaugh, 771-8545
Car Rental Agent: Peter Rodabaugh, 771-8545
Ad Hoc Property Development: Al McCready,
281-2415
Ad Hoc "Union Station": Terry Parker, 284-8742
Chapter representative, Portland Rail Equipment
Advisory Group: Bob Hoffman, 236-7710

CHAPTER OFFICERS

President: Chuck Bukowsky - 284-7277
3004 NE 28th Ave., Portland, OR 97212
Vice President: Dave Van Sickle - 297-3807
9816 SW Arbor Crest Way, Portland, OR 97225
Secretary: Chuck Storz - 289-4529
146 NE Bryant St, Portland, OR 97211
Treasurer: Maxine Rodabaugh - 253-4241
2315 SE 104th Dr. Portland, OR 97216
National Director: Bob Hoffman - 236-7710
545 NE Floral, Portland, OR, 97232
Directors-at-large:
Fred Dorsett - (206) 576-0762
P.O. Box 4202, Vancouver, WA 98662
Al McCready - 281-2415
2407 NE 27th Av, Portland, OR 97212
• Ray Myer - 659-0352
3407 SE Vineyard, Portland, OR 97222
Dick Ordway - (206) 834-2073
2513 NE 232nd Av, Camas, WA 98607
Peter Rodabaugh - 771-8545
5230 SE Center St, Portland, OR 97206
Jerry Schuler - 285-7941
2034 N Webster St, Portland, OR 97217

THE TRAINMASTER
Pacific Northwest Chapter
National Railway Historical Society
Room 1, Union Station
800 NW 6th Avenue
Portland, OR 97209-3715

NON-PROFIT
ORGANIZATION

U.S. Postage
PAID
Portland, Oregon
Permit No. 595

FORWARDING AND RETURN POSTAGE GUARANTEED
ADDRESS CORRECTIONS REQUESTED

M
William Thomasson
7466 N. Van Houten
Portland, OR 97203