

The

July 5-9
2005



Trainmaster

The Official Publication of the
Pacific Northwest Chapter,
National Railway Historical Society
Portland, Oregon



Pacific Northwest Chapter Timetable #515b (modified June 2005 timetable)

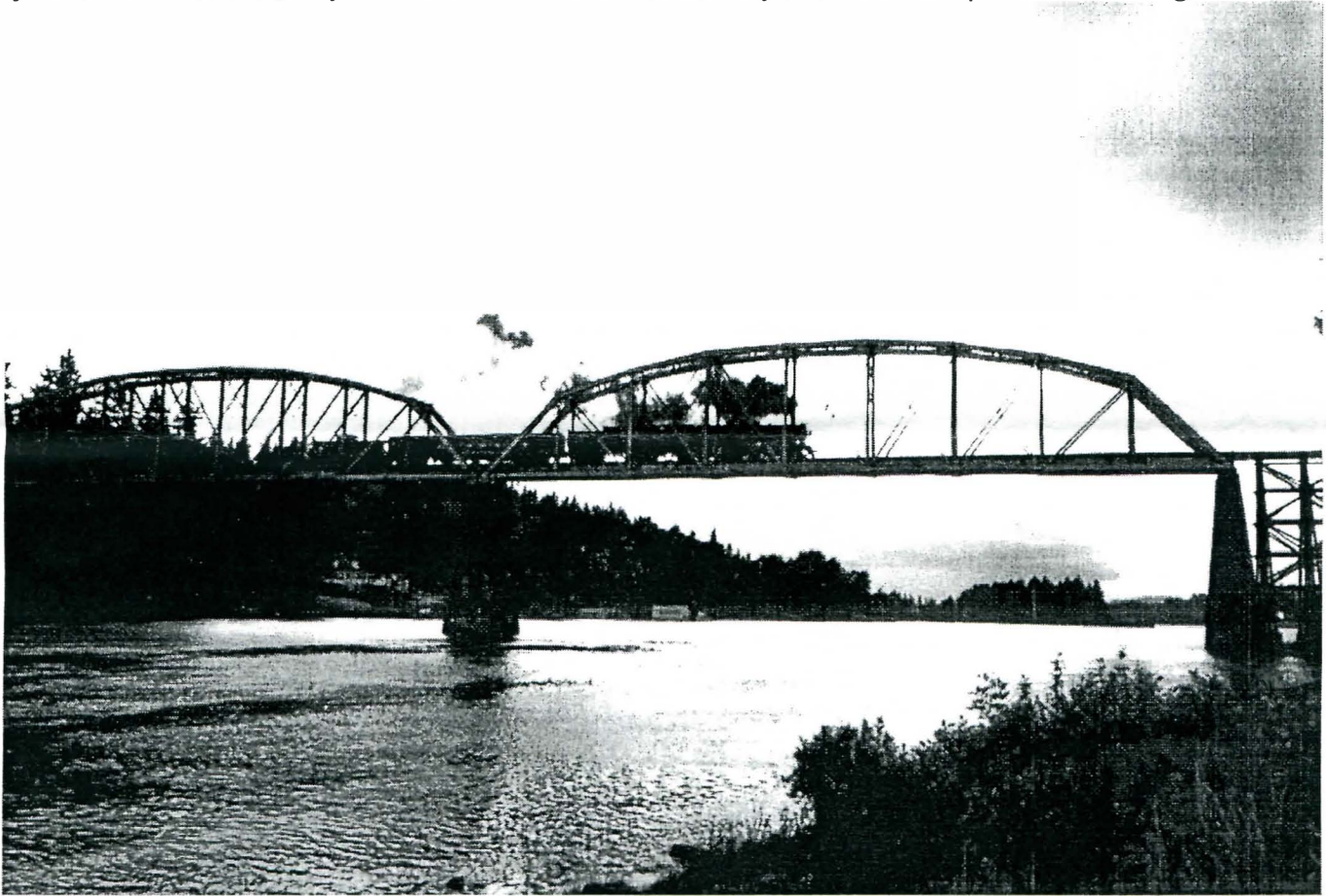
Membership Meetings: Third Friday of Month, 7:30 PM, St. Mark's Lutheran Church, 5415 SE Powell Blvd, Portland

Chapter Outing to Train Mountain: Sept 9-11, 2005, Chiloquin, Oregon: see June Trainmaster for details

Notable Non-Chapter Events:

Mt. Hood Railroad Thomas the Tank Engine Visit June 25th to July 3, Hood River, Oregon

Day Out With Thomas, July 8-10 & 15-17, Northwest Railway Museum, Snoqualmie, Washington.



SP&S 700 crosses from Lake Oswego to Milwaukie, Oregon on May 15, 2005. Photo by Glenn Laubaugh

Welcome to Portland!!

The Pacific Northwest Chapter, National Railway Historical Society publishes a monthly newsletter named *The Trainmaster*, which contains news and information about our activities and railroad related news and items of interest from around the region. This special 2005 National Convention issue is published to welcome the *Go By Train 2005* NRHS Convention attendees and to celebrate the Pacific Northwest Chapter's 50th anniversary.. These special editions of our publication have occurred from time to time for special events, starting in 1997 with the Holiday Junction event at Oregon Museum of Science and Industry that year. The hope is that by giving people a chance to see some of the activities going on in our organization, plus news of surrounding railroads in our area, they would become interested in being more involved with the NRHS and the Pacific Northwest Chapter.

We hope that you have an enjoyable time in Portland, the Pacific Northwest, and at *Go By Train 2005*. One of our most difficult decisions surrounded what events should not be included in the convention due to time constraints. We think that you will agree that our selection of activities is a most enjoyable combination. – Glenn Laubaugh, *Trainmaster* editor

President Roster, Pacific Northwest Chapter

1955 C.J. Jefferson (Jeff) Keenan*	1973 John D. Holloway	1991 G. Charles (Chuck) Bukowsky
1956 Stephen E. Donohoe	1974 Roger W. Sackett	1992 G. Charles (Chuck) Bukowsky
1957 C.J. Jefferson (Jeff) Keenan	1975 Edward E. Immel	1993 George R. (Bob) Hoffman
1958 George R. Burton	1976 John D. Holloway	1994 M. Robert Terkelsen
1959 George R. Burton	1977 William D. Bain	1995 M. Robert Terkelsen
1960 Walter R. Grande	1978 William D. Bain	1996 M. Robert Terkelsen
1961 Walter R. Grande	1979 Edward E. Immel	1997 George N. Hickok
1962 Walter R. Grande	1980 Edward E. Immel	1998 George N. Hickok
1963 E. D. (Ed) Culp	1981 Ben Fredericks	1999 George N. Hickok
1964 Miln Gillespie	1982 Ben Fredericks	2000 George N. Hickok
1965 John M. (Jack) Holst	1983 Fredericks/Duane Cramer	2001 Arlen L. Sheldrake
1966 John M. (Jack) Holst	1984 Richard A. Carlson	2002 Arlen L. Sheldrake
1967 John M. (Jack) Holst	1985 Richard A. Carlson	2003 Arlen L. Sheldrake
1968 Charles W. Storz, Jr.	1986 Richard A. Carlson	2004 Ronald J. McCoy
1969 Charles W. Storz, Jr.	1987 C. Douglas Auburg	2005 Ronald J. McCoy
1970 Roger W. Phillips	1988 Auburg/Hoffman	
1971 Roger W. Phillips	1989 George R. (Bob) Hoffman	
1972 John D. Holloway	1990 George R. (Bob) Hoffman	

* Jeff is credited with being the founding "father" of the Chapter.

Jack M. Holst Memorial Award Winners

At the Chapter's first annual banquet held in January 1982, Chapter President Ben Fredericks announced that member Mary Lou Weaver won the award-naming contest with her entry of the *Jack M. Holst Memorial Award*. The award recognizes an outstanding Chapter member. A committee composed of the immediate past three years award winners nominates members. If multiple nominations, the Committee asks members to vote at a membership meeting. The award is made at the Chapter Annual Banquet. The winners have been:

1981 Charles W. Storz, Jr.	1989 Peter M. Rodabaugh	1997 Darel H. Mack
1982 Irving G. Ewen	1990 Bob Hoffman	1998 George N. Hickok
1983 Edward E. Immel	1991 Roger A. White	1999 Gerald A. Schuler
1984 Walter R. Grande	1992 Bob Weaver	2000 Richard A. Carlson
1985 John D. Holloway	1993 Gerald K. Webb, Sr.	2001 Maxine Rodabaugh
1986 Mary Lou Weaver	1994 <i>No award</i>	2002 Cora Jackson
1987 Bob Slover	1995 James A. Loomis	2003 George N. Hickok
1988 Marilyn L. Edgar	1996 Frank J. Weiler	2004 Glenn E. Laubaugh

A Brief Chapter History

1955 - Chapter chartered on March 16 th , the first NRHS Chapter west of the Rocky Mountains.	1965 - Hosts the first west coast NRHS annual convention that included a field trip to Oaks Pioneer Park to view Portland Park Bureau's transportation exhibit (UP 3203, SP 4449 & SP&S 700) & a rail fan trip to Seaside.
1956 - Chapter promotes Liberty Theater opening of movie <i>Great Locomotive Chase</i>	1966 - First public excursion, Portland to Goldendale, 253 miles, \$6.95 adult, \$3.95 child.
1956 - First issue of <i>The Trainmaster</i> published March 31 st . 488 issues published as of April 2003.	1968 - Offices established in Portland's Union Station.
1958 - Golden Spike driven by Chapter President Keenan & City Commissioner Bean upon delivery and dedication of UP 3203 and SP&S 700 at Oaks Park January 14, 1958.	1969 - <i>Railcon '69</i> , 3 rd annual NW railfan conference hosted by PNWC and Pacific Northwest Live Steamers.
1959 - Members help build the Portland (now Oregon) Zoo Railway steam locomotive <i>Oregon</i> designed by Chapter member George Burton.	1971 - Major restoration work begun on Stimson Timber Company's #1 42-ton 2-truck Shay "Peggy" damaged by the 1964 Old Forestry Building fire, subsequently moved to Oaks Park. Hydrostat test passed 5/71. Moved and given in 1972 to Western (now World) Forestry Center. Also damaged in 1939 Tillamook Forest
1965 - Incorporated, State of Oregon, July 21 st , by Miln D. Gillespie, Walter R. Grande, & John M. Holst.	

- 1972 – *Emperor of the North Pole* filmmakers enlist the Chapter's help to locate 1930s era rail cars.
- 1972 – BN celebrates the donation of the SP&S Mt. Hood #600 & #76 baggage/dorm cars, at Union Station.
- 1972 – Junction City centennial commemorated with PNWC co-sponsored display of railroad development materials.
- 1973 – BN donates several SP&S, GN, NP and OE emblem signs from various bridges.
- 1973 – *Peggy*, former Stimson Lumber Shay locomotive, June 2nd ceremony celebrating permanent display at Western Forestry Center.
- 1975 – Baggage-dormitory car #76 leased to American Freedom Train Foundation & will be the 4449 crew car.
- 1978 – Hosted the NRHS annual convention "*inter/rail78*" which included excursions to Yakima, Seattle, & B.C.
- 1979 – SP4449 & PNWC #76 at Swan Island for Oregon Transportation Week celebration.
- 1981 – Excursion pulled by SP4449 to Sacramento for the grand opening of the California State Railroad Museum.
- 1981 – SP4449-Railfair Sacramento Slide Show, Lloyd Center Auditorium.
- 1981 – SPMW 328 Snow Flanger (wood body) donated by Southern Pacific Transportation Company.
- 1983 – Organized the 75th anniv. of SP&S Golden Spike; special train, ceremony & sign at Sheridan's Point.
- 1984 – SP4449 7,477 mile 51-day excursion to Louisiana World's Fair in New Orleans with chapter cars.
- 1985 – Chapter joins Oregon Assn. of Railway Passengers to restore neon UNION STATION / GO BY TRAIN signs on Union Station tower, turned off 1971.
- 1985 – Special SP train to Toledo, OR celebrating 100th anniversary of the first passenger train arrival.
- 1985 – American Association of Private Railroad Car Owners hosted at Union Station, passenger sheds restored.
- 1985 – Deschutes River Rail Excursion, day 1 passenger count 800.
- 1987 - Cascade Deschutes Rail Adventure - Portland, Deschutes River Canyon, Bend, and return - May 9-10 (850+ passengers)
- 1987 - Seattle Steamboat/Rail Adventure - Portland, Seattle for a cruise on the Virginia V, Portland - Sept 26-27 1987
- \$5,000 donated to Oregon Electric Railway Historical Soc. to preserve SP Jefferson line.
- 1987 – SP4449 management moves from Chapter to the City of Portland and advisory committee.
- 1987 – 76 converted to Museum car & goes to Ashland with exhibit for Oregon & Calif. RR centennial.
- 1988 - Great Northwest Rail Adventure - Portland, Spokane, Seattle, Portland - May 7-8
- 1988 - Seattle Steamboat/Rail Adventure - Portland, Seattle for a cruise on the Virginia V, Portland - Sept 17-18
- 1988 – Chapter's "Museum Train" (Mt. Hood & 76) to Salem for the 50th Anniversary of Oregon's Capitol building.
- 1988 - Cascade Deschutes Rail Adventure - same trip as before except - April 29-30
- 1988 – 3300 & 6800 leased to newly re-formed Mt. Hood Railroad.
- 1988 – Closed Victoria Station Restaurant artifacts donated to Chapter.
- 1988 – Chapter lease of Brooklyn "roundhouse" is replaced by a City of Portland lease.
- 1989 – 3300 & 6800 leased to Rimrock Excursions to run on the City of Prineville Railroad.
- 1990 – Mt. Hood, 3300 & 6800 go to Wishram behind SP&S 700.
- 1990 – Wigwag crossing signal on loan to Columbia Gorge Model Railroad club.
- 1990 – Astoria Jazz Festival special train, October 6-7.
- 1993 – Rail Sensation '93, an official Rose Festival event, co-sponsored with OreARP (now AORTA) & PRPA.
- 1994 – Semaphore signal loaned to Willow Creek Railroad for display at Western Antique Powerland.
- 1996 – 100th anniversary of the February 14, 1896 opening of Union Station celebrated, NRHS Historic Plaque Commission plaque placed.
- 1996 – First web site established.
- 1997 – Hosted Spring NRHS National Board of Directors meeting.
- 1997 – Display at OMSI's "*Holiday Junction*".
- 1998 – Six sold-out mini-excursions operated on 3-days between St. Mary's and Hopmere.
- 1998 – Wilsonville-Beaverton Commuter Rail demo., 22 runs (5996 passengers) during Westside MAX opening.
- 1998 – Display at OMSI's "*Holiday Junction*".
- 1999 – Jordan Spreader arrives in Astoria in front of the first train since 1996.
- 1999 – *Taste of Beaverton* excursions carry more than 2,500 behind PRPA operated SP&S 700.
- 1999 – Two coaches provided for Morse Brothers/Portland & Western RR rock train dedication.
- 2000 – Research materials donated from noted author and member (1957-1999) Walter R. Grande.
- 2001 – Joined Oregon Steam Heritage Foundation (now Oregon Rail Heritage Foundation) to site a permanent home for a museum & Portland's locomotives.
- 2001 – Passenger support functions provided for PRPA's historic SP&S 700 4-day *Homecoming Excursion*.
- 2002 – *Dust Factory* movie production uses 3300, 6200 and Mt. Hood at Bowers Junction, PNWR.
- 2002 – Chapter adopts Union Station clock tower as official logo.
- 2002 – Banks to Salmonberry excursion with: 6200, 6800, Mt. Hood, Gordon Zimmerman, Plum Creek & Casper Mtn.
- 2002 – Selected to host the 2005 NRHS Convention (*Go By Train 2005*).

2003 – *West to Wheeler* 185-passenger excursion in beautiful weather on the POTB Railroad.
 2003 – *Springwater on the Willamette Trail* grand opening, 4449 & 700 excursions, 4000 passengers (tickets/car hosts).
 2003 – Portland & Western Railroad 240-employee special with 6200 & 6800, Albany to Toledo.
 2003 – Former 1917 SP&S #76 Pullman baggage-dorm PNWC #76 car restoration started.
 2004 – Jordan Spreader delivered to MofW exhibit at Antique Powerland Museum on February 14th.
 2004 – Banks to Salmonberry POTB 197 passenger excursion May 22nd.
 2004 – 1996 Commemorative Painting & Plaque commissioned by Rail Sensation Events dedicated, Union Station 10/29.
 2004 – First annual Holiday Train “*Toys for Tots*” event garners 81 toys and books for deserving children.
 2005 – Meyer Memorial Trust grant received to pay for the Snow Flanger move to Antique Powerland Museum.

2002 – *Dust Factory* movie production uses 3300, 6200 and Mt. Hood at Bowers Junction, PNWR.
 2002 – Chapter adopts Union Station clock tower as official logo.
 2002 – Banks to Salmonberry excursion with: 6200, 6800, Mt. Hood, Gordon Zimmerman, Plum Creek & Casper Mtn.
 2002 – Selected to host the 2005 NRHS Convention (*Go By Train 2005*).
 2003 – *West to Wheeler* 185-passenger excursion in beautiful weather on the POTB Railroad.
 2003 – *Springwater on the Willamette Trail* grand opening, 4449 & 700 excursions, 4000 passengers (tickets/car hosts).
 2003 – Portland & Western Railroad 240-employee special with 6200 & 6800, Albany to Toledo.
 2003 – Former 1917 SP&S #76 Pullman baggage-dorm PNWC #76 car restoration started.
 2004 – Jordan Spreader delivered to MofW exhibit at Antique Powerland Museum on February 14th.
 2004 – Banks to Salmonberry POTB 197 passenger excursion May 22nd.
 2004 – 1996 Commemorative Painting & Plaque commissioned by Rail Sensation Events dedicated, Union Station 10/29.
 2004 – First annual Holiday Train “*Toys for Tots*” event garners 81 toys and books for deserving children.
 2005 – Meyer Memorial Trust grant received to pay for the Snow Flanger move to Antique Powerland Museum.

Chapter Officers

President: Ron McCoy (04, 05)
Vice President: David Van Sickle ('04, '05)
Treasurer: Kenneth I. Peters ('04, '05)
Secretary: Jim Long ('03, '04, '05)
National Director: Gerald Schuler

Chapter Directors-at-Large

Ralph Johnson (05, 06, 07)
Arlen Sheldrake (05, 06, 07)
George Hickok (finish out term for 2004,05)
Bob Jackson (03,04,05)
Keith L Fleschner (04, 05, 06)
William D. Hyde (04, 05, 06)
NRHS Regional Vice President: Gerald Shuler,

Committee Chairs

Activities: Darel Mack
Archives: Chuck McGaffey
Meeting Programs: Ralph Johnson
Concessions: Ted Ahlberg
Car #76 Restoration: Keith Fleschner.
Excursions: Kerrigan Gray
 Darel Mack
Car Host: Darel Mack
Finance: See *Vice President*
Library: Irv Ewen
Membership: Diana Mack,
Museum: Glenn Laubaugh,
Public Relations: Gerald Schuler,
Memorial Funds: Gerald Schuler,
Rolling Stock: vacant, contact Ron McCoy
Chief Mechanical Officer:
 Peter Rodabaugh,
Car Rental Agent: Bob Jackson,
Safety Officer: Keith Fleschner
2005 NRHS Convention Chair:
 Arlen Sheldrake
Chapter Rep., Oregon Rail Heritage Foundation:
 Arlen Sheldrake



The Trainmaster is the official news-

letter of the Pacific Northwest Chapter of the National Railway Historical Society. It is published monthly for the benefit of its members. This issue is a special NRHS National Convention issue, produced particularly for 2005 NRHS National Convention attendees. Articles which appear in the *Trainmaster* do not express the official position of the organization on any subject unless specifically noted as such. Material from the *Trainmaster* may be reprinted in other publications provided credit is given as to the source, except in cases where the article originated in a third party publication and special permission was given to the *Trainmaster* to print the article here. Please address contributions, correspondence, and exchange copies of newsletters to:

Attn.: Trainmaster Editor
 PNWC-NRHS, Room 1, Union Station, 800 N.W. 6th Avenue,
 Portland, Oregon 97209-3794

Chapter E-Mail: pnwc@pnwc-nrhs.org
Trainmaster E-Mail: trainmaster@pnwc-nrhs.org
<http://www.pnwc-nrhs.org>

ISSN: 0041-0926

Editor: Glenn Laubaugh, (503) 655-5466

T-M Deadline: 20th of previous month on most months.

Membership in our Organization is available to anyone with an interest in railroad history. Rates are: \$35 total - \$15 for Chapter, \$20 for National